



INLET VACUUM FILTERS

"CSL" Series DN80-DN150 PN10 Pattern Flange

APPLICATIONS & EQUIPMENT

- Vacuum Pumps & Systems – Roots, Side Channel, Rotary Vane, Screw, Piston
- Vacuum Packaging Equipment
- Vacuum Furnaces
- Blowers - Side Channel & Roots
- Intake Suction Filters
- Pneumatic Conveying Systems
- Remote Install for Piston, Screw & Centrifugal Compressors
- Factory Automation Equip
- Ash Handling
- Food Industry
- Paper Processing
- Glass, Ceramic Processing
- Waste Water Treatment
- Woodworking
- Cement
- Bag House Systems
- Envelope Manufacturing
- Medical Industry
- Chemical Processing

FEATURES & SPECIFICATIONS

- **Vacuum level:** Typically 1×10^{-3} mmHg (1.3×10^{-3} mbar)
- Heavy duty T bolts for easy maintenance
- Rugged all steel construction w/baked enamel finish
- Low pressure drop
- Positive engagement O-ring seal system
- **Large** dirt holding capacity and **Easy** field cleaning, especially when mounted horizontally or inverted
- Inlet/outlet 1/4" gauge taps
- Hydrostatically tested to 0.5 bar pressure for vacuum tightness
- Polyester: 99%+ removal efficiency standard to 5 micron
- Paper: 99%+ removal efficiency standard to 2 micron
- Temp (continuous): min -26°C (-15°F) max 104°C (220°F)
- Filter change out differential: 255 - 380 mm H₂O over initial delta P
- Pressure drop graphs available upon request

INLET VACUUM FILTERS
CSL, CT, VL, VS, LRS Series

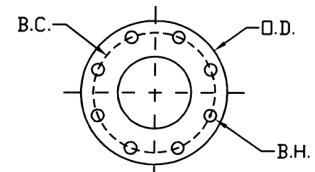
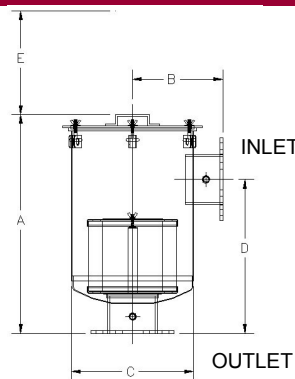
OPTIONS (Inquiries Encouraged)

- Straight-Through Configurations
- Various media
- Larger sizes available
- Available in **Stainless Steel**
- Epoxy coated housings
- Support brackets
- Custom connections
- Activated carbon prefilters to reduce order

CONFIGURATION



DRAWING



Flange Orientation

Note: All side inlet to outlet flanges are orientated "split center".

Dimension tolerance ± 6 mm

I = Industrial Duty S = Severe Duty E = Extreme Duty

	with Polyester Element	with Paper Element	Flange Inlet & Outlet	DIMENSIONS - mm					Rated Flow m ³ /h		Approx. Wt. Kg
				A	B	C	D	E	Nominal Rating	Element Rating	
I	CSL-235P-DN80	CSL-234P-DN80	DN80	689	229	356	470	381	885	970	28
S	CSL-335P-DN80	CSL-334P-DN80	DN80	689	229	356	470	508	885	1360	29
I	CSL-235P-DN100	CSL-234P-DN100	DN100	689	229	356	470	381	885	970	28
S	CSL-335P-DN100	CSL-334P-DN100	DN100	689	229	356	470	508	885	1360	29
I	CSL-245P-DN125	CSL-244P-DN125	DN125	714	279	470	495	381	1360	1500	40
S	CSL-345P-DN125	CSL-344P-DN125	DN125	724	279	470	495	508	1360	1870	41
I	CSL-275P-DN150	CSL-274P-DN150	DN150	740	305	470	521	381	1870	1870	50
S	CSL-375P-DN150	CSL-374P-DN150	DN150	740	305	470	521	508	1870	2550	51

PN10 Pattern Flange	Dimensions - mm			No. of Holes	Thickness Flg mm
	O.D.	B.C.	B.H.		
DN 80	200	160	18	8	20
DN100	220	180	18	8	20
DN125	250	210	18	8	22
DN150	285	240	22	8	22